

ORANGE COUNTY

FIRE WATCH

Volunteer Manual



In Collaboration With

Orange County Fire Authority
Greater Laguna Coast Fire Safe Council
Fire Safe Council East Orange County Canyons
Trabuco Canyon Defense Against Wildfires
County of Orange – OC Parks
City of Irvine
Crystal Cove State Park
Modjeska Canyon Fire Watch
Orange County Sheriff's Department
OCRACES
The Toll Roads
Caltrans
California Highway Patrol
U.S. Forest Service
South County Land Stewards
Rancho Mission Viejo Land Trust
Donna O'Neill Land Conservancy
City of Anaheim - Fire Department
City of Laguna Beach - Fire/Police Departments
City of Aliso Viejo
City of Lake Forest
City of Laguna Woods
City of San Clemente
City of Laguna Hills

Table of Contents

What Is The Fire Watch Program?.....	4
Why Have A Fire Watch Program?.....	5
Who Is Part Of The Fire Watch Network?	6
When Is The Fire Watch Program Activated?	8
What Are The Stages Of A Red Flag Alert?	9
Fire History On The Land	10
Wildland Fire Behavior	18
Weather Resources	25
Activation Of The Orange County Fire Watch Program	27
Signing Up For A Fire Watch Shift	28
What Should I Bring To A Fire Watch Shift?.....	30
Where Will The Fire Watch Locations Be?	31
What Should I Do During A Fire Watch Shift?	94
Ensuring Your Safety.....	95
Communications.....	97
Key Messages For The Public About The Fire Watch Program	98
Key Messages For The Public About Fire Prevention	99
Reporting A Fire to Emergency Services.....	100
Fire Watch Report Forms And Information	101
Emergency Contact Numbers	103

ORANGE COUNTY FIRE WATCH

What Is The Fire Watch Program?

The main goal of the Orange County Fire Watch program is to reduce wildland fire ignition sources. This is accomplished through Fire Watch program volunteers and staff walking and sitting at the perimeters of high-risk areas of Orange County, in order to be visual deterrents, report suspicious or dangerous behaviors or activities, and assist with early detection and reporting of ignitions. The visibility of Fire Watch volunteers in these areas is a deterrent to arson and unintentional or intentional detrimental behavior that may result in wildfire ignitions.

The Orange County Fire Watch program is facilitated in partnership with OC Parks, City of Irvine, Irvine Ranch Conservancy, and Orange County Fire Authority (OCFA). It is part of a larger ignition reduction strategy to reduce catastrophic wildfires and complements other fire watch programs such as the Fire Safe Council East Orange County Canyons, the Greater Laguna Coast Fire Safe Council among others. Irvine Ranch Conservancy and OCFA train volunteers and staff to deploy to specific locations determined by fire spread research, historical ignition data, and participant safety requirements. Deployment occurs on Red Flag Warning days, Santa Ana Wind events, and/or in other special circumstances.

Why Have A Fire Watch Program?

Every year the Coastal Sage Scrub and Chaparral-dominated wildlands in Orange County dry out over the hot summer months, leaving the plant/fuel moisture content very low. They are then prone to strong Santa Ana winds in the fall, which normally include low humidity levels and high temperatures. Combining these four elements creates high fire risk annually. Through wildland fire ignition data analysis it was discovered that the fire cycle in the Orange County wildlands was on the increase. This was mainly being caused by the urban wildland interface. Most local fires are unintentionally or intentionally ignited by humans and most are igniting from roads or other urban wildland interface areas. The Fire Watch program is designed to reduce the rate of human-caused wildland fires by interfering with the ignition sources, especially during extreme weather events, such as the Santa Ana winds.



Who Is Part Of The Fire Watch Network?

Orange County Fire Watch is committed to partnering closely with other organizations and existing groups in the area to help supplement their Fire Watch programs:

Orange County Fire Authority – www.ocfa.org

The Orange County Fire Authority is a regional fire service agency that serves 23 cities in Orange County and all unincorporated areas. The OCFA protects over 1,680,000 residents from its 71 fire stations located throughout Orange County. OCFA Reserve Firefighters work 10 stations throughout Orange County. Irvine Ranch Conservancy works closely with OCFA to train Fire Watch volunteers and coordinate Fire Watch activities. OCFA is the source looked to for Red Flag Alerts and other fire condition updates.

Greater Laguna Fire Safe Council – www.lagunacoastfiresafecouncil.org Laguna Canyon and Laguna Beach

To help protect the local region from future disasters, like the one that occurred in 1993, the greater Laguna Coast Fire Safe Council was organized. This group has received funding from the Federal Bureau of Land Management to develop activities to keep residents informed about fire danger and to promote fire mitigation measures. Please contact David Horne, Chairman of the Council, at (949) 494-5157 for information and questions regarding this area.

Fire Safe Council East Orange County Canyons – www.fsceocc.org Silverado Canyon & Santiago Canyon Road

The Fire Safe Council East Orange County Canyons was formed “to provide education, exchange information and foster emergency preparedness, fire prevention and safety in and around the East Orange County foothill and canyon communities.

Trabuco Canyon Defense Against Wildfires Trabuco, Holy Jim, and Rose Canyons

The Trabuco Canyon Defense Against Wildfires group is a cooperative effort between residents of Trabuco, Holy Jim, and Rose Canyons. Please contact Sharon Stancato at (949) 413-5464 for information and questions regarding this area.

Modjeska Canyon Fire Watch

Modjeska Canyon Watch is responsible for organizing Fire Watch activities in Modjeska Canyon, Williams Canyon, the Modjeska Grade Road, and the stretch of Santiago Canyon Road. Please Contact Jeanette Villegas at (310) 614-6824 for information.

Crystal Cove State Park – www.crystalcovestatepark.com

Crystal Cove State park has 3.5 miles of beach and 2,000 acres of undeveloped woodland, which are popular for hiking, biking, and horseback riding. Crystal Cole shares a large boundary with the City of Irvine’s Open Space Preserve, and Laguna Coast Wilderness Park. Irvine Ranch Conservancy works closely with Crystal Cove State Park rangers and managers to coordinate Fire Watch activities near this boundary. Contact information for Crystal Cove is located in the back of this manual.

City of Anaheim - Fire Watch

The City of Anaheim deploys volunteers with their Community Emergency Responses Team (CERT) and Radio Amateur Communications Emergency Services (RACES) team to do mobile fire watch patrol in the fire prone areas of Anaheim Hills. Contact information: Mary Jo Flynn at maryjflynn@anaheim.net.

City of Laguna Beach - Fire Watch

The City of Laguna Beach deploys volunteers with their Community Emergency Responses Team (CERT) to the stationary lookout position at Alta Laguna Park also referred to as “Top of the World”. The position overlooks Laguna Coast Wilderness Park, Laguna Canyon Road and Aliso & Wood Canyon Regional Park. Contact information: Jordan Villwock at jvillwock@lagunabeachcity.net.



When Is The Fire Watch Program Activated?

In partnership with OCFA, the Orange County Fire Watch program is activated during Red Flag Warnings and/or Santa Ana wind events. The closure of Orange County wildlands is the decision of each area's land manager and/or owner. OCFA recommends that all wildlands be closed during Red Flag Alerts. Please refer to each landowners' posted notices for closure status.

National Weather Service Red Flag Warning

Activation of a Red Flag Warning depends on local weather and fuel conditions. When information from the National Weather Service on current and predicted weather conditions plus information from fire service field sources indicate that the danger of fire is immediate and high, a warning will be issued. This determination follows a basic formula used by all cooperating agencies. A combination of wind, temperature, relative humidity, and live fuel moisture govern fire weather severity. In addition, this condition may occur when suppression and prevention forces are severely depleted by other fires and incidents, or extraordinary circumstances.

A Fire Weather Watch or Red Flag Warning will be issued by the National Weather Service for any affected area where the wind speed is expected to be 25 mph or greater and the relative humidity is expected to drop to 15% or less. OCFA may also locally declare a "Hazardous Fire Condition" and take local actions when several, but not all, of the Red Flag Warning criteria exist and a formal Red Flag Warning declaration has not been issued.

Orange County Fire Watch will activate as soon as the Orange County Fire Authority has issued a Red Flag Warning or during Santa Ana Wind events. In addition, as conditions dictate, Orange County Fire Watch may occasionally activate, even if the Orange County Fire Authority has not declared a Red Flag Warning.

The Stages Of A Red Flag Warning

Fire Weather Watch

- High potential for development of a Red Flag Warning
- Issued in the 18 to 96 hour time frame prior

Red Flag Warning

- High confidence that Red Flag criteria will be met within the next 48 hours or less, or criteria are already being met
- A sustained average wind of greater than or equal to 25 mph
- Relative humidity less than or equal to 15%
- A temperature of greater than 75°F
- Assumes fuels are receptive to ignition
- General or Limited
 - *General*: Red Flag conditions exist, or are occurring, over a large portion of Southern California, verified and implemented by the local officer in charge.
 - *Limited*: Red Flag conditions exist, or are occurring, in somewhat isolated geographic areas of Southern California, verified and implemented by the local officer in charge.
 - Usually issued 24 hours in advance but may be issued as the event is occurring.

Red Flag Cancellation

- Red Flag conditions no longer exist, verified and cancelled by OCFA.

Fire History On The Land

Traditionally, fire season in Southern California has been from May through September. However, over the past fifteen years, a trend has emerged whereby Orange County has experienced some of its most devastating wildfire during the period of October through April (2002 Green Fire, 2006 Sierra Fire, 2007 Windy Ridge Fire, 2007 Santiago Fire, 2008 Freeway Complex Fire) leading to no official closing of the fire season in recent years. Orange County's wildfire history has repeated itself for thousands of years. Narrow canyons, mountainside slopes, and ridgelines with curving saddles are all typical to wildland regions of Orange County that sustain and intensify fires. Common Orange County vegetation, such as chaparral thickets and coastal sage scrub, creates highly flammable leaves and dry woods during its normal life cycle. Many areas of Orange County have fuels ranging from 50-100 years old that are highly volatile.

Over the past 30 years Orange County has experienced a number of major wildland fire disasters. Four of these major fire sieges from the last 18 years (1993 Laguna, 2002 Green Fire, 2007 Santiago Fire and 2008 Freeway Complex Fire) share common denominators that include:

- Prolonged extreme Santa Ana wind events
- Multiple major fires occurring simultaneously
- Fires that occurred later or outside of the traditional fire season period

Human or Suspicious Causes

All of these fires resulted in catastrophic losses of life, property, and valuable native ecosystems. Over the years a number of other factors have contributed to this trend of disastrous fires during the Fall season, including prolonged drought conditions and more homes and roads being built in the wildland-urban interface.

Historic Data

2006 Sierra Fire:

10,506 acres burned
0 structures burned
0 structures damaged
8 injuries
0 deaths
0 homes evacuated
\$7.1 million – cost to fight
Cause – prescribed burn

2007 Santiago Fire:

28,517 acres burned
42 structures burned
14 structures damaged
197 injuries
0 deaths
7,300 homes evacuated
\$6.6 million – cost to fight
Cause – arson

2007 241 at Windy Ridge Fire:

2,036 acres burned
2 structures burned
1 structures damaged
3 injuries
0 deaths
1200 homes evacuated
\$1.5 million – cost to fight
Cause – arson – stolen vehicle
burned

2008 Freeway Complex Fire:

30,305 acres burned
200 structures burned
161 structures damaged
0 injuries
0 deaths
9,000 homes evacuated
\$16.1 million – cost to fight
Cause – accidental – vehicle

2006 - 2012 Totals:

71,364 acres burned
244 structures burned
176 structures damaged
208 injuries
0 deaths
17,500 homes evacuated
\$31.3 million – cost to fight
Cause – humans

30 Year Major Fire History – Orange County

<i>Year</i>	<i>Date</i>	<i>Fire Name</i>	<i>Acres</i>
1978	23-Oct	Soquel	5,428
1979	15-Sep	Paseo	3,644
1980	28-Oct	Owl	18,332
1980	16-Nov	Carbon Canyon	14,613
1980	24-Nov	Indian	28,408
1982	9-Oct	Gypsum	19,986
1987	9-Sep	Silverado	5,988
1988	4-Sep	Ortega	2,471
1989	3-Jul	Ortega	8,170
1989	18-Oct	Assist #108 (Mateo)	13,478
1990	27-Jun	Carbon Canyon	6,664
1990	12-Jul	Yorba	7,884
1993	27-Oct	Laguna Fire	14,337
1993	27-Oct	Ortega	21,010
1997	13-Oct	Baker	4,835
1998	31-Aug	Santiago Canyon	7,760
2002	9-Feb	Green	2,234
2006	6-Feb	Sierra Peak	10,506
2007	11-Mar	241 (Windy Ridge)	2,036
2007	21-Oct	Santiago	28,517
2008	15-Nov	Freeway	30,305



Human Caused Fire

The majority of wildland fires in Southern California are human caused—either accidental or intentional. Less than 3% of all wildland fires in southern California are due to natural causes (lightning strike, etc.). California is the most populated state in the nation, and human-caused fire leads all causes of ignition. In a strong statement of how population increases wildfire risk, linear regression data from 1921 to 1993 for California's Sierra Nevada foothills and similar data for southern California's Riverside County suggest with 95% confidence that the addition to former wildlands of 1 housing unit per square mile means an additional 0.001733 ignitions per year per 1,000 acres, and an increase of 1 person per square mile means an additional 0.001438 ignitions per year per 1,000 acres. Roughly, this suggests that, for every 600 homes or 700 people, there will be one more ignition per year per 1,000 acres. This suggests a strong correlation between expanding populations in wildland interface areas and increased wildfire activity. That is why it is so important to address the human ignition problem.

Arson Enticement

Areas that have proven time and time again to be favored as ignition points by arsons are:

- Along roadsides
- Obscured locations
- Adjacent to slopes covered with receptive fuel beds
- Along known fire corridors

The following map shows the history of Fire Ignitions Orange County:

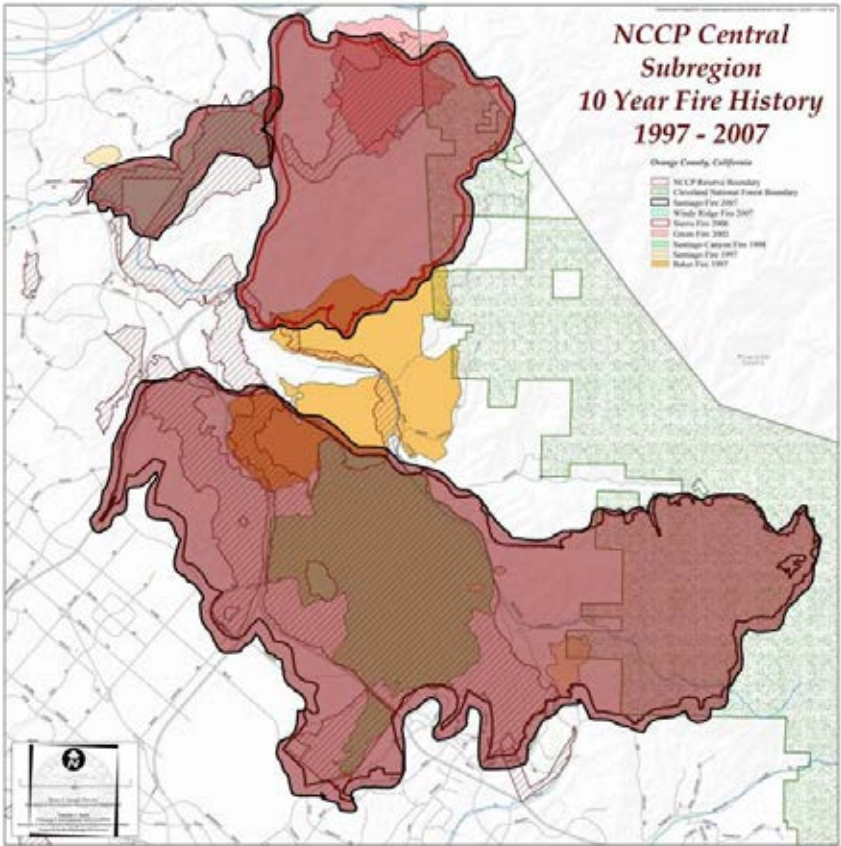


Fire Corridors

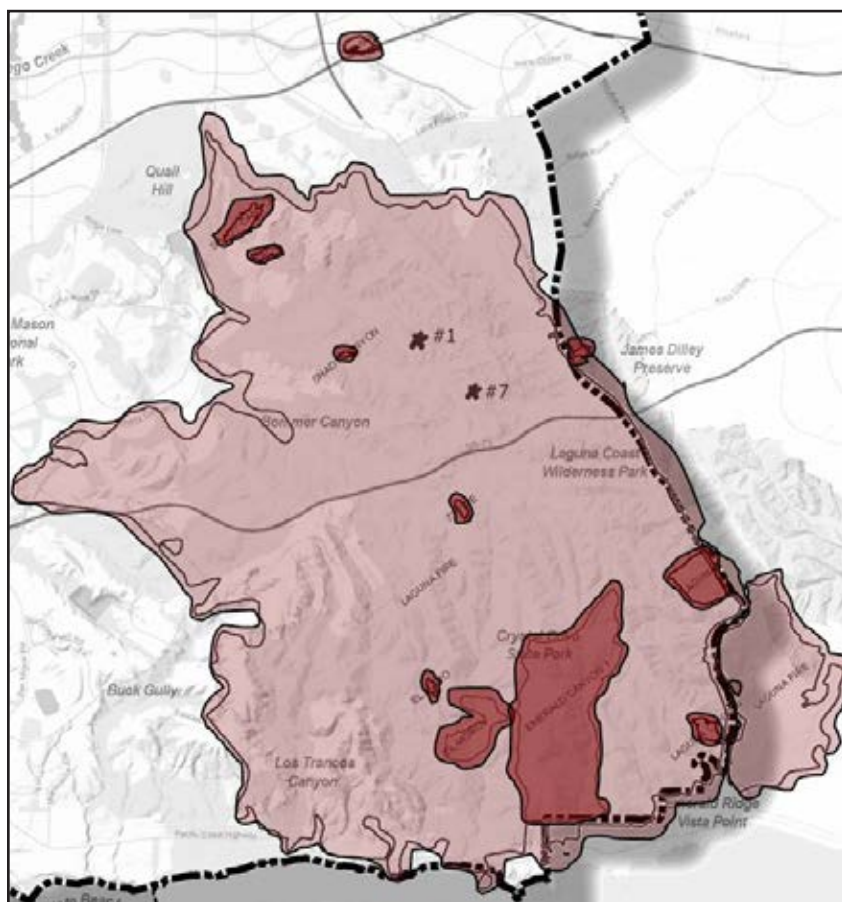
Fire corridors are areas where both natural and man-made landscapes have created a location where fires are more prevalent. Fires in these areas are seen more frequently and often have a rapid spread. Local fire corridors in Orange County include the land between the Chino Hills State Park and Cleveland Nation Forest, Santiago Canyon, Ortega Highway, and Laguna Canyon. Below are maps of the past fires that occurred in local fire corridors of Santa Ana Canyon, Laguna Canyon, and Santiago Canyon.



Above map shows historic fires burning in the Santa Ana Canyon Corridor.



Above map shows historic fires burning in the Santiago Canyon Corridor



Above map shows fires that have burned in the Laguna Canyon Corridor.

Community Reasons

Prevention of fire in and around the Orange County wildlands helps ensure the safety of thousands of households and individuals, as well as personal and private property. The Santiago Fire resulted in estimated damages and insurance costs of \$275 million. The Fire Watch program helps prevent ignitions of fires that can result in death, injury or other damage. Wildland fires can detrimentally affect air quality, impacting the health of individuals suffering from asthma and other respiratory illnesses. Catastrophic wildfires also have a significant economic impact. From 2006 – 2012, the cost to fight fires in Orange County was \$31.3 million.

Ecological Purpose

Human-caused fires in the wildlands also can have drastic and detrimental ecological consequences long term. While many of our native ecosystems are adapted to occasional fires, they are easily destroyed by human-caused fires that burn too often. Native habitat is degraded by frequent fire, and over time the composition of the habitats change. The resulting wildlands are highly vulnerable to invasion by non-native species like non-native grasses, black mustard, artichoke thistle, castor bean and Russian thistle, which in turn increase the frequency of the fire cycle. In short, these special, globally important ecosystems will be lost over time through too much fire. Through the Fire Watch program we hope to reduce the number of future wildfires in Orange County wildland areas and help to preserve these fragile, and globally significant ecosystems.



Wildland Fire Behavior

Elements of a Fire

When enough heat is applied to a fuel in the presence of air, fire will be produced. However, fire is only produced when all three elements are present in the right amounts. Fire cannot exist if any one of the elements (heat, fuel, or air) is absent. The key to predicting fire behavior is understanding how all the factors influence fire and each other.

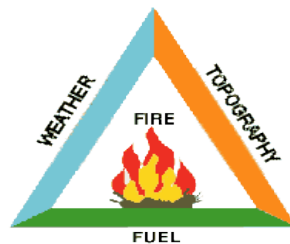
Wildland fire behavior is determined by the types of fuel, weather conditions, and topography.

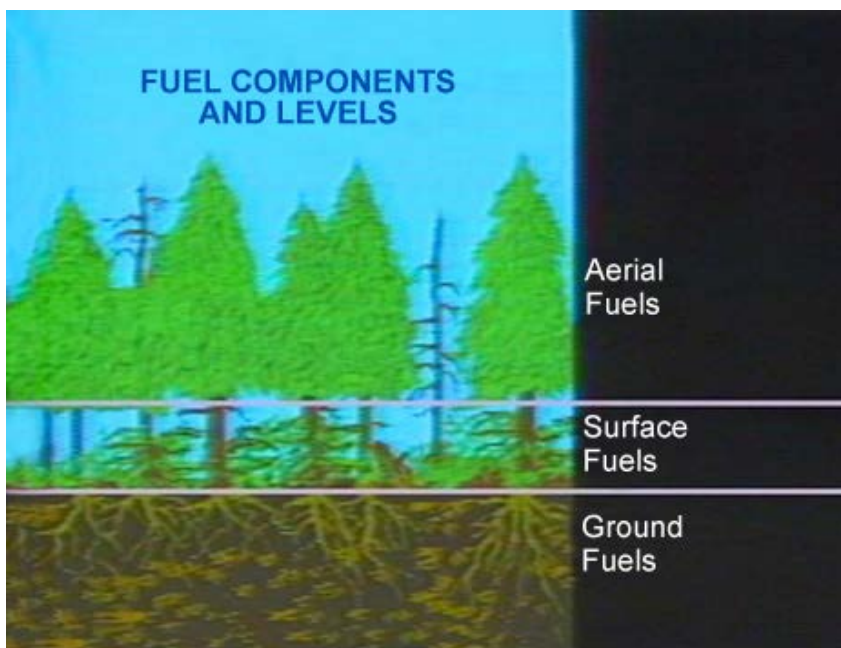
Fuels

Fuel characteristics also determine the potential fire intensity and influence the preheat which the fire spreads. Fuels are classified by two factors: fuel type and vertical position.

There are two types of fuels, light or fast-burning fuels and heavy or slow-burning fuels. Light fuels are generally dry grass, dead leaves, tree needles, brush, and small trees. Light fuels can cause rapid spread of fire and serve as kindling for heavier fuels. While fires in light fuels are usually easier to suppress, it is important not to underestimate them. Fires in light fuels can move extremely fast and with great intensity. A high percentage of fire fatalities are the result of underestimating a fire in light or “flashy” fuels.

Heavy or slow-burning fuels are generally logs, stumps, branch wood, logging slash or debris, and deep duff (partially decomposed organic material of the forest floor beneath the freshly fallen twigs, needles, and leaves). Heavy fuels burn readily and produce large volumes of heat when dry. Fires in heavy fuels are much harder to suppress. The position of fuel is classified into three categories:





- **Ground fuels:** small twigs, leaves, needles, and duff (which have fallen)
- **Surface fuels:** grass, field crops, brush, and small trees.
- **Aerial fuels:** suspended fuels, large trees or other vegetation and leaves and needles on trees.

Fuel moisture is an important factor as well, as it can affect how easily a fuel will ignite and how intensely it will burn. It is not uncommon to have over 100 tons of fuel per acre.

Weather

The following components all influence how a fire will behave at a given time:

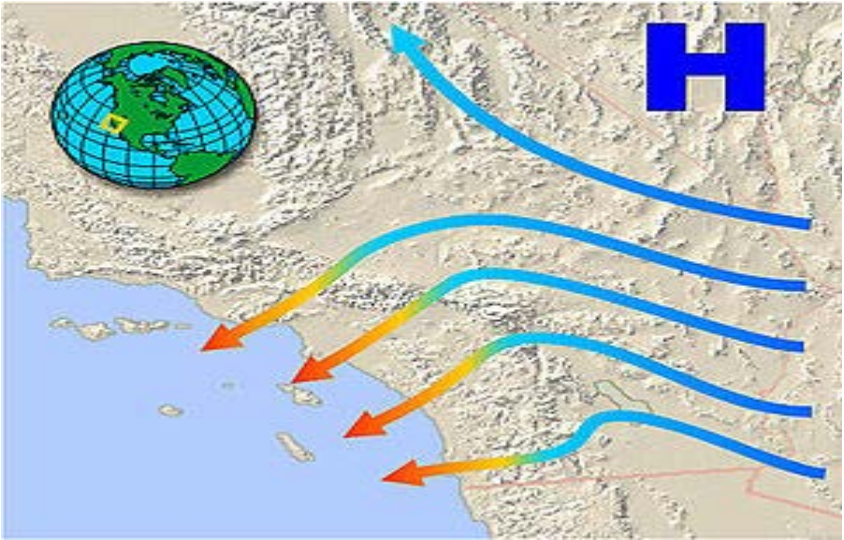
Temperature: It is not just the current day's weather that will influence the fire; the weather of previous days will also have an effect. Fire behavior is influenced by the weather. The wind can cause fires to spread faster or in different directions. The hotter the temperature, the easier it is for a fuel source to ignite because the air temperature has already warmed it. Warm fuels will ignite and burn faster. Temperature will also influence the moisture in the air as well as in the fuel itself. The more humid the air, the harder it is for a fire to ignite and continue burning. If the fuel is green and full of moisture, it is less likely to burn. This is why Santa Ana winds in late January are usually not a fire concern; the fuel is green as a result of the rains that begin in November. Wind, temperature, and moisture are important and will also vary from area to area. Micro-climates will exist throughout the wildland and affect the way fire behaves.

Wind

What Causes Santa Ana winds?

The Santa Ana winds are strong, extremely dry down-slope winds that originate inland and affect coastal Southern California and northern Baja California. Santa Ana winds blow mostly in autumn and winter, but can arise at other times of the year also. They can range from hot to cold, depending on the prevailing temperatures in the source regions—the Great Basin and upper Mojave Desert. The winds are known especially for the hot dry weather (often the hottest of the year) that they bring in the fall, and are infamous for fanning regional wildfires. For these reasons, they are sometimes known as the “devil winds” across Southern California.

These winds, which can easily exceed 40 mph, are warm and dry and can severely exacerbate brush or forest fires, especially under drought conditions.

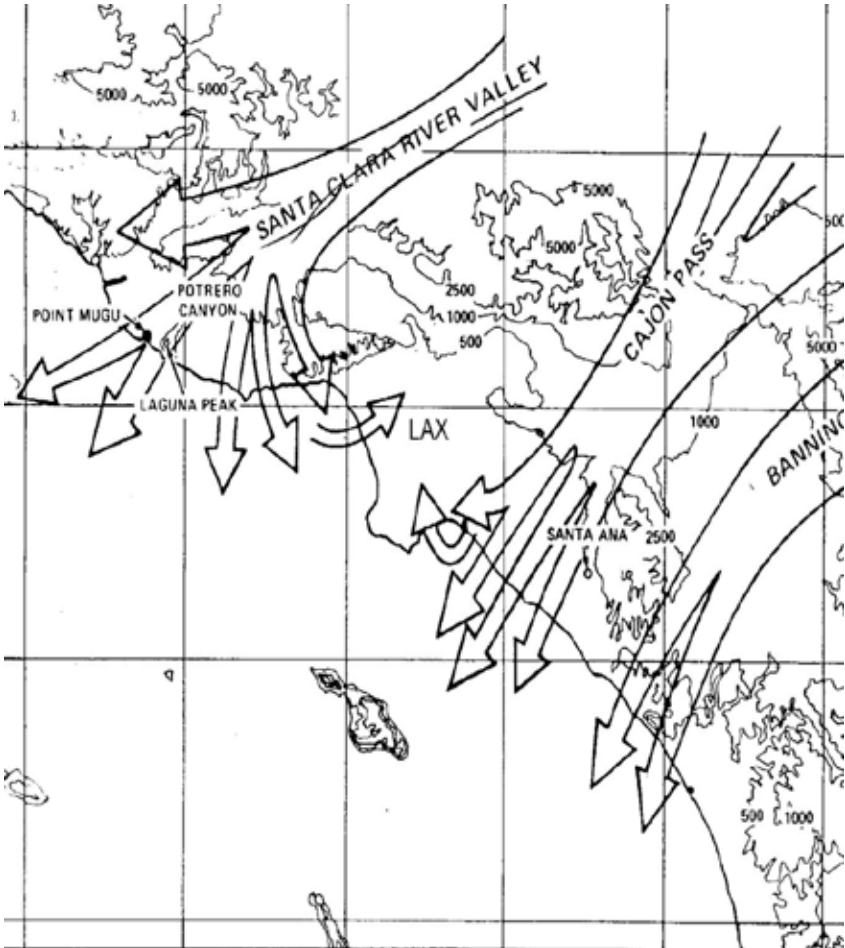


This map illustration shows a characteristic high-pressure area centered over the Great Basin, with the clockwise anticyclone wind flow out of the high-pressure center giving rise to a Santa Ana wind event as the air mass flows through the passes and canyons of Southern California, manifesting as a dry northeasterly wind.

Santa Ana air masses originate from high-pressure systems over the Great Basin and upper Mojave Desert. The air heats up from adiabatic heating during its descent. While the air has already been dried by orographic lift before reaching the Great Basin Great Basin as well as by subsidence from the upper atmosphere, the relative humidity of the air is further decreased as it descends from the high desert toward the coast, often falling below 10 percent.[5] It is often said that the air is heated and dried as it passes through the Mojave and Sonoran deserts, but according to meteorologists this is a popular misconception.

The Santa Ana winds usually form during autumn and early spring when the surface air in the elevated regions of the Great Basin and Mojave Desert (the “high desert”) becomes cool or even cold (although they may form at virtually any time of year). As the cool, dense air from the desert blows out toward the coast, it tends to channel down the valleys and canyons and through the major mountain passes. Gusts can attain hurricane force at times. The Southern California coastal region gets some of its hottest weather of the year during autumn while Santa Ana winds are blowing. During Santa Ana conditions it is typically hotter along the coast than in the deserts.

The combination of wind, heat, and dryness accompanying the Santa Ana winds turns the chaparral into explosive fuel feeding the infamous wildfires for which the region is known. Wildfires fanned by Santa Ana winds burned 721,791 acres (2,920.98 km²) in two weeks during October 2003. These same winds have contributed to the fires that have burned some 426,000 acres (1,720 km²) as of late October 2007.



Topography

The topography of an area has a great effect on how and where a fire can burn; canyons, saddles and ridges can all change fire behavior. Slope affects the spread of fire in two ways: by preheating the fuels and by creating a draft effect. Consequently this is also one of the reasons fire travels more quickly uphill. Understanding topography and its effects on fire behavior is important for both our safety and for reporting to emergency services.

Slope: During the day, fire is more likely to move up a slope than it is to run down a slope. This is because as it moves up a slope, it 'preheats' the fuel above it which results in that fuel being more likely to ignite. Wind will also likely move a fire upward during the day. At night, the wind may be moving down slope which may facilitate the fire moving down the hill. Wind direction is influenced by topography.



Fire preheating fuels above it and running up slope.



Fire burning up-slope from a road.

Canyons: A fire that starts in a canyon will have a tendency to move uphill; up the canyon walls. In a place like Black Star Canyon Road, there is only one safe route to take out if a fire starts there.

Saddles: A fire will condense in the low part of the saddle and then begin climbing the slope.

Ridges: Fires will move along ridgelines because they encounter less resistance moving laterally than they do moving down hill. Ridgelines can be dangerous because people become trapped and the fire overtakes them.



Weather Resources

As Fire Watch volunteers, you will find it helpful to monitor weather conditions on your own. You should be watching for spikes in temperatures during the fall and winter as well as decrease in humidity and the prediction of Santa Ana winds. High pressure ridges developing over the Great Basin should be watched for and monitored over time. Watching 7-day forecasts helps to see these weather patterns as they start to develop. This may give you advanced knowledge of a Fire Weather Watch or a Red Flag Warning and the subsequent activation of the Fire Watch program. There are a variety of resources available to monitor the weather, a few are listed below:

The National Weather Service

www.weather.gov

A division of the National Oceanic and Atmospheric Administration (NOAA), the National Weather Service has a website with current information on weather conditions throughout the country.

The National Weather Service – California Fire Weather

www.wrh.noaa.gov

The NWS has recently launched a site dedicated to fire conditions in California called the California Fire Weather web page. This site has current information on Red Flag watches and warnings throughout California. This site has a wide variety of weather information that can be searched through to help determine if a Fire Weather Watch or a Red Flag Warning will be declared.

Fremont Canyon Weather Station

www.wrh.noaa.gov/

The Fremont Canyon Weather Station is located on a peak in northern Irvine Ranch. The website reporting the station's readings is updated frequently and provides an excellent source for local weather monitoring. This website link is also listed in the Irvine Ranch Conservancy's Fire Watch website.

Bell Canyon Weather Station

www.wrh.noaa.gov/

The Bell Canyon Weather Station is located on a peak in Caspers Wilderness Park in South Orange County. The website reporting the station's readings is updated frequently and provides an excellent source for local weather monitoring.

El Cariso Weather Station

www.wrh.noaa.gov/

The El Cariso Weather Station is located on a ridge behind the El Cariso Forest Service Station off Ortega highway in the Cleveland National Forest. The website reporting the station's readings is updated frequently and provides an excellent source for local weather monitoring.

Southern California Geographic Area Coordination Center

<http://gacc.nifc.gov/>

The Southern California Geographic Area Coordination Center (OSCC) is the focal point for coordinating the mobilization of resources for wildland fire and other incidents throughout the Geographic Area. OSCC also provides Intelligence and Predictive Services. This site provides fire forecast based on predicted weather and fuel readings.

911 Weather

www.911weather.com

This website provides information about weather warnings and alerts. You can sign up, for a fee, and receive customized information. However, the site also lists consolidated local weather warnings and alerts and has a section dedicated to "fire weather" that is available at no cost.

Activation Of The Orange County Fire Watch Program

The following steps describe the process that occurs when the Fire Watch program is activated.

1. The National Weather Service issues a Fire Weather Watch.
2. Automated Fire Watch phone call alerting to pending fire weather.
3. Fire Watch locations posted at www.LetsGoOutside.org.
4. National Weather Service and the Orange County Fire Authority issue a Red Flag Warning.
5. Second automated Fire Watch phone call alerting to active Fire Watch deployment.
6. Log onto the Fire Watch webpage and sign up for shifts at posted Fire Watch locations.
7. Drive to the selected location and perform your Fire Watch duties.
 - Always wear your Fire Watch vest.
 - Always use your Fire Watch vehicle magnets.
 - Always have your badge on.
 - At the end of your shift submit Fire Watch reports.
 - Sign up for another shift.

Cancellation

1. The Red Flag Warning is cancelled by the National Weather Service and/or OCFA (on average a 3 day event).
2. Automated phone call alerting to Red Flag Warning cancellation.

Signing Up for a Fire Watch Shift

Finding Fire Watch Listings

When a Fire Watch is deployed by Irvine Ranch Conservancy, a broadcast voicemail will tell you when to visit the LetsGoOutside.org website to look for deployment shifts. When that happens, most other activities are cancelled, making it easy to find Fire Watch activities on the Activities page at www.letsgooutside.org/activities/

1 My Account | Log Out

2 About | Activities | Explore | Volunteer

3 Activities and Programs

4 Fire Watch: Bommer Canyon (South Irvine)

NOTES:

1. If this does not say “My Account,” you are not logged in, and you will not see Fire Watch activities.
2. Click on “Activities” from the home page to get to this page.
3. Activities are listed by date.
4. Each Fire Watch Activity title will have this title formatting, and the listings will not be visible to the public.

Signing up for Fire Watch

Each Fire Watch activity listing is for a single day at a single location. Each activity has two shifts, and a comments section to add details about when you are able to serve. The AM shift is generally 9 am-1:30pm, and the PM shift is generally 1:30 pm to 6 pm, but this may vary at different times of the year. If you can work all day in one location, sign up for both AM and PM shifts. You can also sign up for AM and PM shifts in different locations. We appreciate whatever time you can serve, so if you can make only part of a shift, please sign up and then add a comment about your availability.

The screenshot shows a web page for a Fire Watch activity in Bommer Canyon (South Irvine). The page includes a navigation bar, a title, a date and time section, a volunteer sign-up table, a comment section, and a 'Post Comment' button. Numbered callouts (5-9) highlight specific elements: 5 points to the date and time; 6 points to the 'Sign Up' buttons in the table; 7 points to a user comment; 8 points to the comment text area; and 9 points to the 'Post Comment' button.

5. Double-check that you have selected the correct day. The full time for the Fire Watch will be listed, but you can select AM and PM shifts below.

Area	Shift	Volunteer	Phone	Email	Action
Bommer Canyon Trailhead (FW)	AM	Jenn Starnes	(949) [REDACTED]	jstarnes@conservancy.org	Sign Up
Bommer Canyon Trailhead (FW)	AM				Sign Up
Bommer Canyon Trailhead (FW)	PM				Sign Up
Bommer Canyon Trailhead (FW)	PM				Sign Up

6. Click "Sign Up" for the shift you would like to cover. To serve all day, sign up for both an AM and PM. The cell phone and email address from your Account appears here.

7. This is where comments from volunteers will appear regarding scheduling.

8. For scheduling notes such as "I can work 9 am-2pm" or "I will not arrive until 10 am." Visible only to staff and volunteers.

9. Submit your comment by clicking "Post Comment" at the bottom of the page.

What Should I Bring To A Fire Watch Shift?

Preparing for Your Fire Watch Shift

Confirm that your cell phone and digital camera are operable and charged.

Dress appropriately for the conditions:

- Your volunteer shirt, Fire Watch vest, & prominently displayed name badge are required.
- Wear sturdy shoes; a hat & long pants are recommended.
- Check and stock your Fire Watch backpack for all needed supplies.
Please check your Fire Watch backpack for the following items before you leave your home.

IRC will provide you with many items. Other items you need to provide yourself. The latter are marked with an asterisk (*) in the list below.

Name Badge	Sunscreen*	Depending on your assignment, you may also need: Folding/ Beach Chair* Shade Umbrella*
Fire Watch Vest	Lip Balm*	
Fire Watch Vehicle Magnets	Binoculars*	
Fire Watch Manual	Cell Phone*	
Fire Watch Handouts	Car charger for cell phone*	
First Aid Kit	Spare batteries for camera or other electronics*	
Report Forms	Windbreaker or extra jacket as needed*	
Extra Paper*		
Maps*		
Dust Mask*		
Goggles*		
Clipboard*		
Plenty of Water*		
Food as needed*		
Pens / pencils*		

Where Will The Fire Watch Locations Be?

In the event of a Red Flag Warning, the Fire Watch program will be activated in the following locations. Please sign up for a location and a shift on the Volunteer section of the website as soon as you are made aware of a potential activation.

Fire Watch Locations

- Aliso & Woods Canyon Wilderness Park #1 Kite Hill
- Aliso & Woods Canyon Wilderness Park #2 Wood Canyon Drive
- Aliso & Woods Canyon Wilderness Park #3 Talavera Drive
- Carbon Canyon Regional Park #1 Dam Road
- Carbon Canyon Regional Park #2 Carbon Canyon Road
- Caspers Wilderness Park #1 Ranger Station Lookout Tower
- Caspers Wilderness Park #2 Lucas Gate/Ortega Highway
- City of Irvine Open Space #1 SB Laguna Canyon Road Turnout
- City of Irvine Open Space #2 Quail Hill
- City of Irvine Open Space #3 Bommer Canyon Trailhead
- Irvine Ranch Open Space #1 Gypsum Canyon Gate
- Irvine Ranch Open Space #2 Weir Canyon Road
- Irvine Ranch Open Space #3 Augustine Gate
- Irvine Ranch Open Space #4 Spur Gate
- Irvine Ranch Open Space #5 Black Star Gate
- Irvine Ranch Open Space #6 Modjeska Turnout
- Irvine Regional Park #1 Park Entrance
- Irvine Regional Park #2 Cemetery
- Irvine Regional Park #3 Santiago Canyon Road
- Laguna Coast Wilderness Park #1 Ridge Park
- Laguna Coast Wilderness Park #2 SB Laguna Canyon Road
- O'Neill Regional Park #1 Oso Parkway Bridge Turnout
- O'Neill Regional Park #2 Arroyo Vista Gate
- Peters Canyon Regional Park #1 Main Parking Lot
- Riley Wilderness Park #1 Main Parking Lot
- Riley Wilderness Park #2 Oso Road/Pump House
- Santiago Oaks Regional Park #1 Serrano Avenue
- Santiago Oaks Regional Park #2 Ave De Santiago/Hidden Hills
- Whiting Ranch Wilderness Park #1 Glen Ranch Parking Lot
- Whiting Ranch Wilderness Park #2 Santiago Canyon Road
- Yorba Regional/Featherly Park #1 La Palma Avenue

Please refer to maps, starting on the next page, for detailed directions to each Fire Watch location. All maps courtesy of Google Maps: <http://maps.google.com>

Fire Watch Location



Fire Watch Location Map



Aliso & Wood Canyons Wilderness Park #1 Kite Hill

Thomas Brothers Guide: 951 E1

GPS: 33°33'14.2" N 117°43'01.5"W

Driving Directions From the 5 Freeway

- Exit South Oso Parkway and head west.
- Oso Parkway turns into Pacific Park.
- Left on Alicia Parkway.
- Make your first left past Aliso Creek Road.

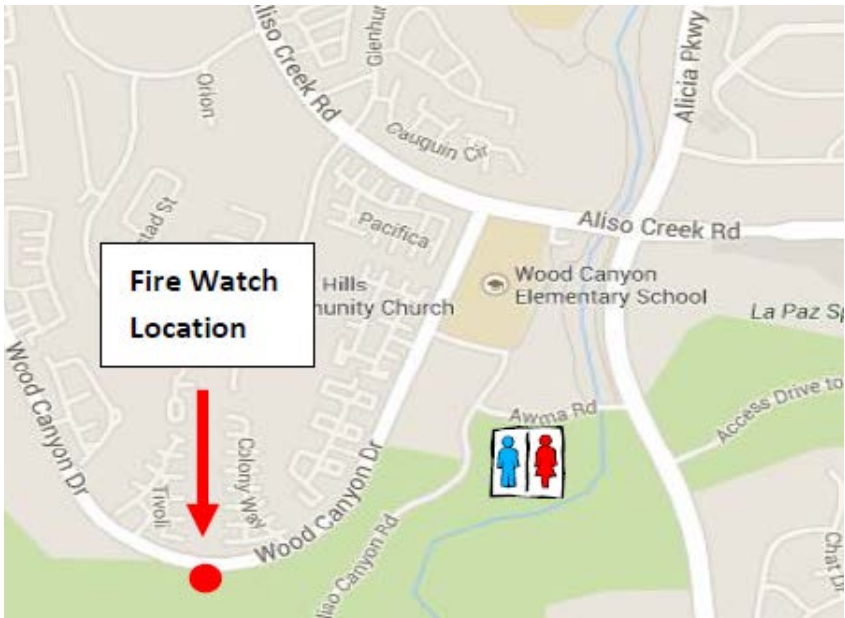
Safety & Hazards

- The road up to the location is a steep and narrow one lane road.
- This location is used as a model airplane and glider park. Be aware of model air planes in the air and in the parking lot.
- Restrooms are located in the parking lot.

Fire Watch Location



Fire Watch Location Map



Aliso & Wood Canyons Wilderness Park #2 Wood Canyon Road

Thomas Brothers Guide: 951 D2

GPS: 33°32'56.6" N 117°43'38.9"W

Driving Directions From the 5 Freeway

- Exit South Oso Parkway and head west.
- Oso Parkway turns into Pacific Park.
- Left on Alicia Parkway.
- Right on Aliso Creek Road.
- Left on Wood Canyon Drive.
- Make a U-Turn at Tivoli and head back down Wood Canyon Drive. The turnout is on your right hand side.

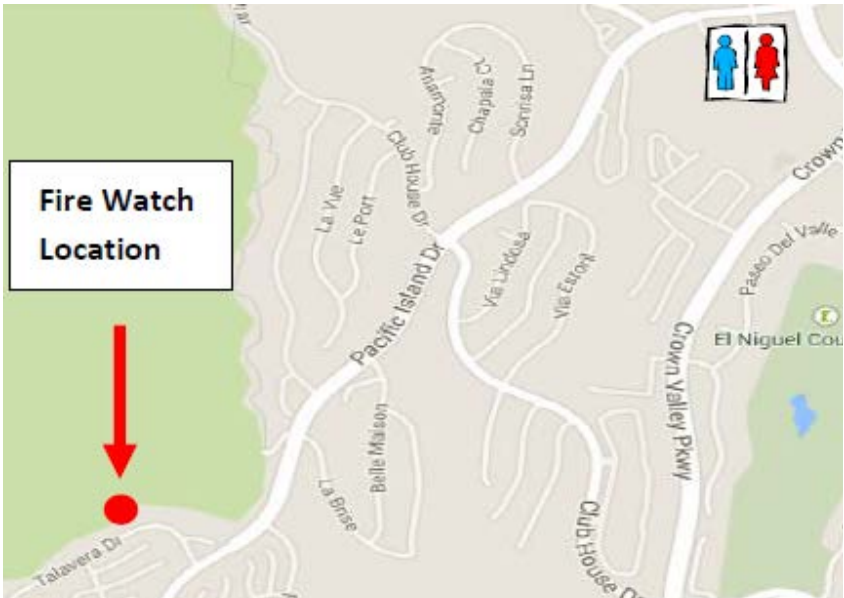
Safety & Hazards

- High traffic area. Use caution entering and exiting location. Vehicles traveling at high rate of speed.
- Location is surrounded by large amount of light, flashy fuels.

Fire Watch Location



Fire Watch Location Map



Aliso & Wood Canyons Wilderness Park #3 Talavera Drive

Thomas Brothers Guide: 951 D7

GPS: 33°30'51.4" N 117°43'49.3"W

Driving Directions From the 5 Freeway

- Exit Crown Valley head south.
- Right on Alicia Parkway.
- Left on Pacific Island Drive.
- Right on Talavera Drive.

Driving Directions From Pacific Coast Highway

- Turn north on Pacific Island Drive from PCH.
- Left on Talavera Drive.

Safety & Hazards

- Steep terrain and topography in the canyon could create fire conditions that could cut off an escape route.
- There is a trailhead into the County Park at this location.
- Restrooms located at the nearby shopping center off of Alicia & Pacific Park.

Fire Watch Location



Fire Watch Location Map



Carbon Canyon Regional Park #1 Dam

Thomas Brothers Guide: 710 D7

GPS: 33°54'59.0" N 117°50'32.4"W

Driving Directions From the 57 Freeway

- Eastbound 57 Freeway.
- Exit Lambert Road, turn right onto Lambert Road.
- Lambert Road turns into Carbon Canyon Road.
- Park Entrance is 200 ft past Valencia Ave on your right hand side.
- Check in at the Park Office to be passed in through the gate.
- Make your first right turn as you go through the gate. Follow the road as it curves up to the left past the maintenance yard.

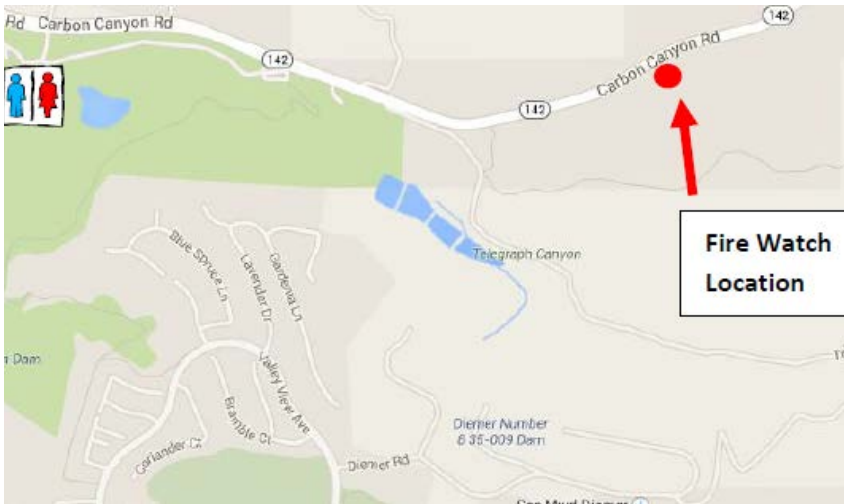
Safety & Hazards

- Narrow one lane service road to location with large amount of light flashy fuels. May be cut off if fire occurs. Alternative escape routes down two other service roads near location.
- Good view of the County Park and Chino Hills State Park.
- Good Ham Radio location.

Fire Watch Location



Fire Watch Location Map



Carbon Canyon Regional Park #2 Carbon Canyon Road

Thomas Brothers Guide: 709 B7

GPS: 33°55'19.2" N 117°48'58.0"W

Driving Directions From the 57 Freeway

- Eastbound 57 Freeway.
- Exit Lambert Road, turn right onto Lambert Road.
- Lambert Road turns into Carbon Canyon Road.
- The turnout is approximately 1.3 miles past the main park entrance on your right side.

Safety & Hazards

- High vehicle traffic.
- Beware of overhead power lines.
- Large ignition history in Carbon Canyon.

Fire Watch Location



Fire Watch Location Map



Caspers Wilderness Park: #1 Lookout Tower

Thomas Brothers Guide: 893 G7

GPS: 33°32'12.2" N 117°33'11.3"W

Driving Directions From the 5 Freeway

- Exit Ortega Highway and head east for approximately 8 miles.
- Turn Left into entrance into Caspers Wilderness Park.
- Tell the gate attendant you're the fire watch volunteer and going to the Watch tower and the Park Office.
- Continue to follow the main road as it curves up to the left. Park office and tower are located on the hill.

Safety & Hazards

- Location is within park, fuel and topography could create fire conditions that could cut off escape route.
- High public interaction location on the weekends.
- Location has view of the park as well as the Cleveland National Forest.

Fire Watch Location



Fire Watch Location Map



Caspers Wilderness Park: #2 Ortega/Lucas Gate

Thomas Brothers Guide: 953 G7

GPS: 33°33'27.0" N 117°32'54.5"W

Driving Directions From the 5 Freeway

- Exit Ortega Highway and head east for approximately 8.5 miles.
- Turnout area is on your right hand side with green wood fencing.

Safety & Hazards

- Be careful entering and exiting location. Vehicles traveling at a high rate of speed.
- Be aware that this is also an entrance for a commercial rock quarry frequented by heavy trucks.
- High ignition history along Ortega Highway.

Fire Watch Location



Fire Watch Location Map



City of Irvine Open Space #1 Laguna Canyon Road

Thomas Brothers Guide: 953 G7

GPS: 33°37'42.9" N 117°45'36.6"W

Driving Directions From the 405 Freeway

- Exit 133/Laguna Canyon Road.
- Travel south on Laguna Canyon road for approximately 1.5 miles.
- The turnout is 1/2 mile past Lake Forest drive on your right side. Watch as the guard rail ends and opens up to a gravel road just after the sign that says "Emergency Parking Only".
- Park vehicle at an angle facing southbound traffic so your placard is visible.

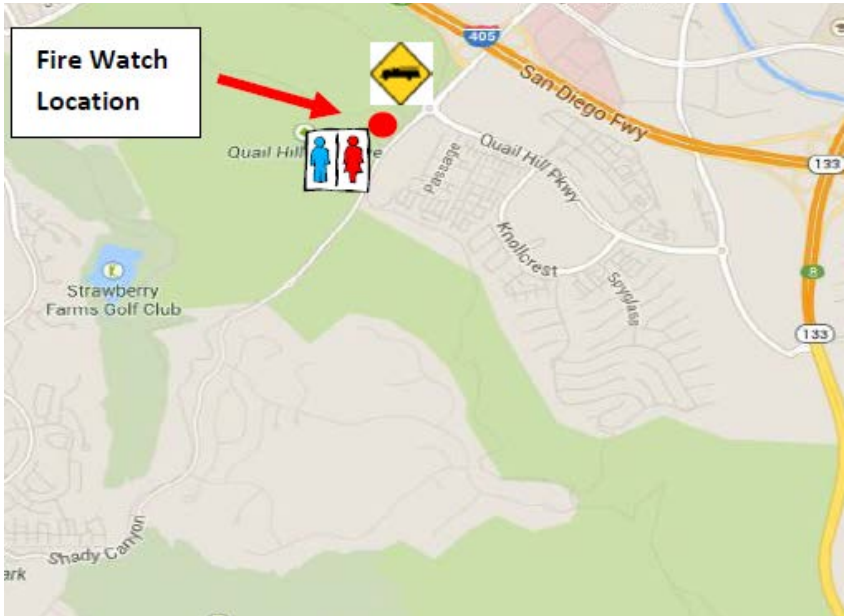
Safety & Hazards

- Be careful entering and exiting location. Vehicles traveling at a high rate of speed.
- Be aware of overhead power lines along the road that can become damaged during high winds or fire.
- High ignition history along Laguna Canyon Road.
- Restrooms are located at the Nix Nature Center/Laguna Coast Wilderness Park entrance proximity another mile down the road on the right hand side.

Fire Watch Location



Fire Watch Location Map



City of Irvine Open Space #2 Quail Hill Trailhead

Thomas Brothers Guide: 890 F2

GPS: 33°39'13.8" N 117°47'00.5"W

Driving Directions From the 405 Freeway

- Exit Sand Canyon Road and head west 300 feet.
- You'll travel through a roundabout then continue straight past OCFA Fire Station 47.
- Travel another 200 feet and turn right into the parking lot.

Safety & Hazards

- Be careful entering and exiting location. Vehicles traveling at a high rate of speed.
- High public interaction location. Popular trailhead for hiking and biking.
- High amount of light flashy fuels.
- Restrooms are located in the parking lot area.
- Dogs on leashes are allowed on Quail Hill trail.

Fire Watch Location



Fire Watch Location Map



City of Irvine Open Space #3 Bommer Canyon

Thomas Brothers Guide: 890 D5

GPS: 33°37'42.2" N 117°48'22.7"W

Driving Directions from the 405 Freeway

- Exit Culver and head west for 3 miles.
- Left on Shady Canyon.
- Right on Bommer Canyon Road.
- Park in front of the access gate near the trailhead and out of the way of traffic.

Driving Directions from the 73 Toll Road

- Exit Bonita Canyon and head east.
- Right on Shady Canyon Drive.
- Follow Shady Canyon Drive approximately 1.2 miles.
- Right on Bommer Canyon Road.
- Park in front of the access gate near the trailhead and out of the way of traffic.

Safety & Hazards

- High public interaction location. Popular trailhead for hiking and biking.
- High amount of light flashy fuels in the area.
- Restrooms are located within the parking area.
- Dogs on leashes are allowed only on the bike path along Shady Canyon Drive.

Fire Watch Location



Fire Watch Location Map



Irvine Ranch Open Space #1 Gypsum Canyon Gate

Thomas Brothers Guide: 741 E7

GPS: 33°51'53.3" N 117°42'37.5"W

Driving Directions from the 91 Freeway

- Exit Gypsum Canyon Road and head west.
- Park at the end of Gypsum Canyon Road where the road meets East Santa Ana Canyon in the dirt pull off.
- Park so that you can see down Santa Ana Canyon as well as Gypsum Canyon.

Driving Directions from Jamboree Road heading North

- Left on East Santiago Canyon Road - before Jamboree Road turns into Irvine Park
- Right on Cannon Street and follow for about 0.6 miles
- Right onto Serrano Avenue and follow for about 5.1 miles.
- Left onto South Weir Canyon Road
- Make a right onto Santa Ana Canyon Road before the 91 freeway entrance
- Follow Santa Ana Canyon Road until it ends, Gypsum gate will be on the right

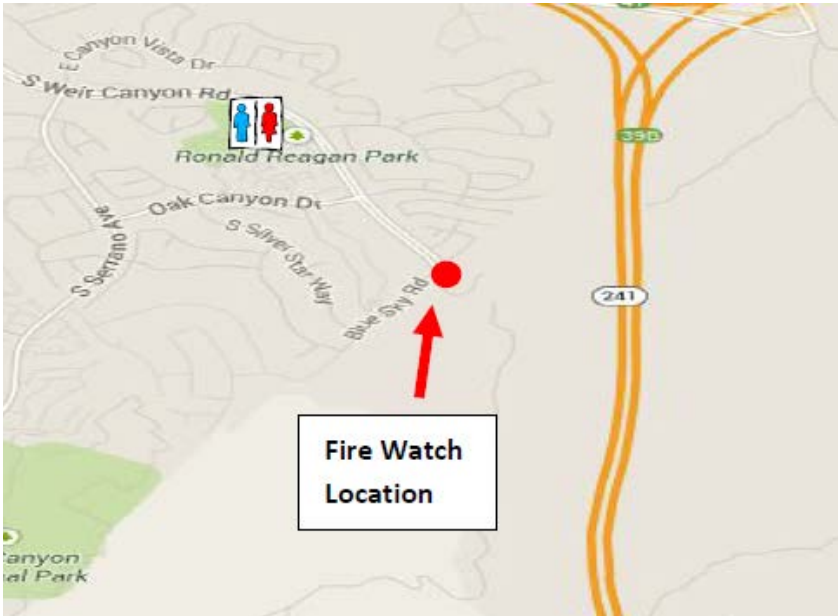
Safety & Hazards

- High amount of light flashy fuels in the area.
- Restrooms are located at nearby Featherly Park.
- Area is known as a high access point for unauthorized off road dirt bikers.

Fire Watch Location



Fire Watch Location Map



Irvine Ranch Open Space #2 Weir Canyon

Thomas Brothers Guide: 771 D2

GPS: 33°51'08.3" N 117°43'24.6"W

From the 91 Freeway

- Exit South Weir Canyon Road and head south.
- Follow Weir Canyon Road approximately 1.8 miles until it ends.
- Park at the end of Weir Canyon where it meets East Blue Sky Lane.

From Serrano Avenue heading North

- Right on Marblehead Way (all small side streets through the community).
- Make a Right on Night Star Way.
- Left onto Blue Sky Lane.

Safety & Hazards Considerations

- High vehicle traffic area.
- Park off the road way in the gravel and away from brush.
- Anaheim FD has a mobile Fire Watch patrol in area during Red Flag Days who will check in periodically.
- Restrooms are location at nearby Reagan Park off Weir Canyon.

Fire Watch Location



Fire Watch Location Map



Irvine Ranch Open Space #3 Augustine Gate

Thomas Brothers Guide: 801 G1

GPS: 33°45'27.7" N 117°41'58.7"W

Driving Directions from the 5 Freeway or Jamboree Road

- From the 5 Freeway exit Jamboree Road and head north (towards Tustin Marketplace).
- Follow Jamboree Road approximately 5.5 miles to Santiago Canyon Road.
- Right on Santiago Canyon Road.
- Follow Santiago Canyon Road approximately 4.5 miles.
- Right into the Augustine staging area directly after going under a white bridge (the only bridge over Santiago Canyon Road).
- Look for the right hand turn.

Driving Directions from South Orange County

- Take El Toro Road east (toward Saddleback Mountain). El Toro turns into Santiago Canyon Road.
- Follow Santiago Canyon Road approximately 1.8 miles past Silverado Canyon Road.
- Augustine staging area entrance will be on the left hand side.
- Look for the left hand turn lane only.

Safety & Hazards

- Be careful entering and exiting location. Vehicles traveling at a high rate of speed.
- Overhead power lines along and near the roadway. Park off the road and clear of the bike lane.
- Restrooms are located behind the gate in the Augustine staging area. If you are using the restrooms, keep gate locked.

Fire Watch Location



Fire Watch Location Map



Irvine Ranch Open Space #4 Spur Gate

Thomas Brothers Guide: 801 J2

GPS: 33°45'10.0" N 117°41'03.3"W

Driving Directions from the 91 Freeway

- From the 5 Freeway exit Jamboree Road and head north (towards Tustin Marketplace).
- Follow Jamboree Road approximately 5.5 miles to Santiago Canyon Road.
- Right on Santiago Canyon Road.
- Follow Santiago Canyon Road approximately 5.5 miles.
- Pull off Santiago Canyon Road and park on the gravel shoulder shortly after passing the Augustine Gate.

Driving Directions from South Orange County

- Take El Toro Road east (toward Saddleback Mountain). El Toro turns into Santiago Canyon Road.
- Follow Santiago Canyon Road approximately 0.7 miles past Silverado Canyon Road.
- Left into the gravel parking area along Santiago Canyon Road.

Safety & Hazards

- Be careful entering and exiting location. Vehicles traveling at a high rate of speed.
- Overhead power lines along and near the roadway. If damaged by wind or fire could fall and cut off your primary escape route.
- Restrooms are located behind the gate in the Augustine staging area. If you are using the restrooms, keep gate locked.

Fire Watch Location



Fire Watch Location Map



Irvine Ranch Open Space #5 Black Star Canyon

Thomas Brothers Guide: 832 A1

GPS: 33°45'51.7" N 117°40'41.1"W

Driving Directions from the 5 Freeway or Jamboree Road

- From the 5 Freeway exit Jamboree Road and head north (towards the Tustin Marketplace).
- Follow Jamboree Road approximately 5.5 miles to Santiago Canyon Road.
- Right on Santiago Canyon Road.
- Follow Santiago Canyon Road approximately 6 miles.
- Left on Silverado Canyon Road.
- First left on Black Star Canyon Road.
- Follow Black Star Canyon Road to the end approximately 1 mile.
- Park on the left hand side of the gate so you can see both Black Star and Baker Canyon.

Driving Directions from South Orange County

- Take El Toro Road east (towards Saddleback Mountain). El Toro turns into Santiago Canyon Road.
- Right on Silverado Canyon Road.
- First left on Black Star Canyon Road.

Safety & Hazards

- Narrow road with one way in and out.
- Overhead power lines and tree branches along the road. If damaged by wind or fire could fall and cut off your primary escape route.
- Surrounding topography in the canyon could create fire conditions that could cut off escape route.
- Restrooms are located at the Baker staging area. If you are using the restrooms keep the gate locked.

Fire Watch Location



Fire Watch Location Map



Irvine Ranch Open Space #6 Modjeska Canyon

Thomas Brothers Guide: 832 D6

GPS: 33°42'56.4" N 117°38'47.4"W

Driving Directions from the 5 Freeway or Jamboree Road

- From the 5 Freeway exit Jamboree Road and head north (towards Tustin Marketplace).
- Follow Jamboree Road approximately 5.5 miles to Santiago Canyon Road.
- Right on Santiago Canyon Road. Continue for approximately 9 miles.
- The turnout is on the right hand side of the road 100 feet past Modjeska Canyon Road next to call box 16.

Driving Directions from South Orange County

- Take El Toro road east (towards Saddleback Mountain). El Toro turns into Santiago Canyon Road.

Safety & Hazards

- Be careful entering and exiting location. Vehicles traveling at a high rate of speed.
- Overhead power lines along the roadway. If damaged by wind or fire could cut off primary escape route.
- Restrooms are located either to the north at the Augustine staging area or to the south at Cooks Corner Restaurant.

Fire Watch Location



Fire Watch Location Map



Irvine Regional Park #1 Front Entrance

Thomas Brothers Guide: 800 J3

GPS: 33°47'46.4" N 117°45'39.4"W

Driving Directions From the 5 Freeway or Jamboree Road

- From the 5 Freeway exit Jamboree Road and head north (toward Tustin Marketplace).
- Follow Jamboree Road until it dead ends at Irvine Regional Park Entrance.
- Park in front of the trail entrance swing gate.

Safety & Hazards

- Be careful entering and exiting location. Vehicles traveling at a high rate of speed.
- Highly visual location with motorists and patrons entering the park.
- Restrooms are located within the park. Drive through the main gate and turn left. Restrooms are on your right hand side.

Fire Watch Location



Fire Watch Location Map



Irvine Regional Park #2 Cemetery

Thomas Brothers Guide: 800 H1

GPS: 33°48'13.1" N 117°46'07.1"W

Driving Directions From the 5 Freeway or Jamboree Road

- From the 5 Freeway exit Jamboree Road and head north (toward Tustin Marketplace).
- Left on E Santiago Canyon Road just before the entrance to Irvine Regional Park.
- Continue on E Santiago Canyon Road for approximately 0.5 miles and turn right into the Cemetery of the Holy Sepulcher.
- After going through the gate make a right and park in the open dirt lot facing Irvine Regional Park.

Safety & Hazards

- Be careful entering and exiting location. Vehicles traveling at a high rate of speed.
- Restrooms are located within the park. Drive through the main gate and turn left. Restrooms are on your right hand side.
- Good Ham Radio location.

Fire Watch Location



Fire Watch Location Map



Irvine Regional Park #3 Santiago Canyon Road

Thomas Brothers Guide: 801 A4

GPS: 33°47'21.8" N 117°45'19.5"W

Driving Directions From the 5 Freeway or Jamboree Road

- From the 5 Freeway exit Jamboree Road and head north (toward Tustin Marketplace).
- Right on Santiago Canyon Road. Continue for 0.25 miles and on your right hand side is a turn out and parking area next to the Water District Pump station.

Safety & Hazards

- Be careful entering and exiting location. Vehicles traveling at a high rate of speed.
- Restrooms are located at the nearby shopping center, or at Peters and Irvine Regional Parks.
- High amount of light flashy fuels.
- Location has a view of the backside of Irvine Regional Park.

Fire Watch Location



Fire Watch Location Map



Laguna Coast Wilderness Park #1 Ridge Park

Thomas Brothers Guide: 920 E1

GPS: 33°36'20.9" N 117°48'06.3"W

Driving Direction from Pacific Coast Highway

- Turn east onto Newport Coast Road for approximately 2.5 miles.
- Right on Ridge Park Road.
- Ridge Park Road dead ends at the park entrance. Park as close to the trailhead as possible.

Safety & Hazards

- Restrooms are location at the nearby Coastal Peak Park.
- Location sits at the top of many saddles, chutes and ridges.
- Steep winding road to location that could be cut off during a fire.
- High amount of light flashy fuels.

Fire Watch Location



Fire Watch Location Map



Laguna Coast Wilderness Park #2 Laguna Canyon Road

Thomas Brothers Guide: 920 E1

GPS: 33°36'54.2" N 117°45'37.5"W

Driving Directions from the 405 Freeway

- Exit the 405 Freeway and head south on 133/Laguna Canyon Road for approximately 2.5 miles.
- Turnout will be on your right hand side approximately 100 feet past an "Emergency Parking Only" sign.

Safety & Hazards

- Be careful entering and exiting location. Vehicles traveling at a high rate of speed.
- Be aware of overhead power lines along the road that can become damaged during high winds or fire.
- High ignition history along Laguna Canyon Road.
- Restrooms located at the Nix Nature Center/Laguna Coast Wilderness Park entrance located another 0.5 mile down the road on your right hand side.

Fire Watch Location



Fire Watch Location Map



O'Neill Regional Park #1 Oso Bridge Turnout

Thomas Brothers Guide: 892 F3

GPS: 33°35'11.1" N 117°38'16.7"W

Driving Directions from the 5 Freeway

- Exit Oso Parkway and head east for approximately 2.5 miles.
- Make a U-turn at Antonio Parkway and drive back towards the bridge.
- The turnout is on your right hand side toward the end of the bridge and is visible by an OC Parks sign.

Driving Directions from the 241 Toll Road

- Exit Oso Parkway and turn right and continue for approximately 1.5 miles.
- The turnout is on your right hand side toward the end of the bridge and is visible by an OC Parks sign.

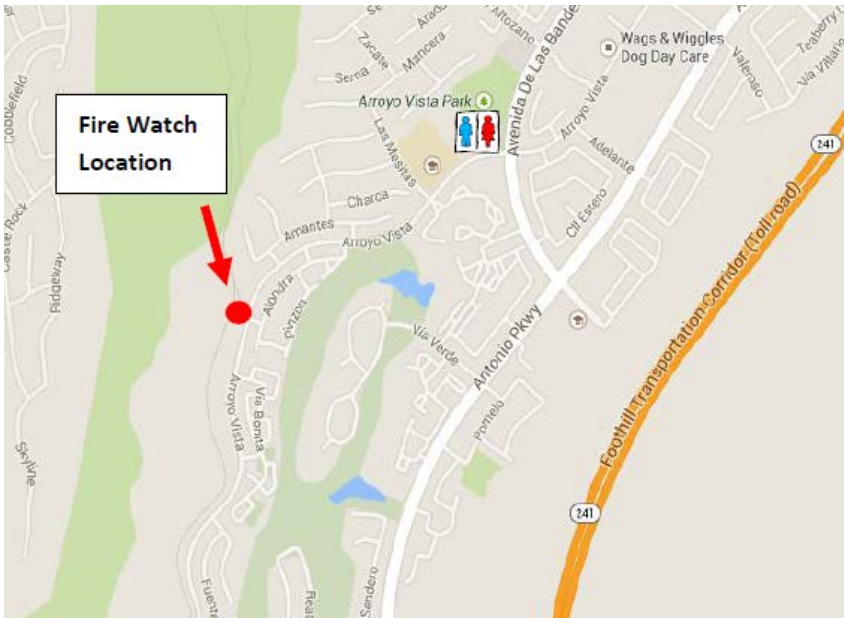
Safety & Hazards

- Be careful entering and exiting location. Vehicles traveling at a high rate of speed.
- Be aware of overhead power lines along the road that can become damaged during high winds or fire.
- Restrooms are located at the shopping center at Oso Parkway and Antonio proximity another 0.5 mile down the road on your right hand side.

Fire Watch Location



Fire Watch Location Map



O'Neill Regional Park #2 Arroyo Vista Gate

Thomas Brothers Guide: 892 J3

GPS: 33°37'09.8" N 117°37'17.6"W

Driving Directions from the 5 Freeway

- Exit Oso Parkway and head east for approximately 2.5 miles.
- Left onto Antonio Parkway.
- Left on Avenida Banderas.
- Left on Arroyo Vista and continue for 0.25 mile. Trailhead will be on your right hand side.

Driving Directions from the 241 Toll Road

- Exit Antonio Parkway and head south.
- Right on Avenida Banderas.
- Left on Arroyo Vista and continue for 0.25 mile. Trailhead will be on your right hand side.

Safety & Hazards

- Be careful entering and exiting location. Vehicles traveling at a high rate of speed.
- Restrooms are located at nearby Arroyo Vista Park.

Fire Watch Location



Fire Watch Location Map



Peters Canyon Regional Park #1 Main Parking Lot

Thomas Brothers Guide: 800 J4

GPS: 33°47'02.3" N 117°45'43.8"W

Driving Directions from the 5 Freeway or Jamboree Road

- From 5 Freeway exit Jamboree road and head north (Towards Tustin Marketplace).
- Left on Canyon View land and make your first left into the parking lot.
- Park near park ranger office.

Safety & Hazards

- Be careful entering and exiting location. Vehicles traveling at a high rate of speed.
- Light flashy fuels surrounding the area.
- Restrooms are located within the parking lot.

Fire Watch Location



Fire Watch Location Map



Riley Wilderness Park #1 Main Parking Lot

Thomas Brothers Guide: 923 B5

GPS: 33°34'21.9" N 117°35'34.4"W

Driving Directions from the 5 Freeway

- Exit Oso Parkway and head east 6.5 miles.
- Turn right into the entrance to Riley Wilderness Park. Continue down the dirt road and turn right into the main parking lot.

Driving Directions from the 241 Toll Road

- Exit and turn left on Oso Parkway.
- Continue for approximately 2 miles. The park entrance will be on your right hand side.
- Drive into the first parking lot and park near the trailhead.

Safety & Hazards

- Be careful entering and exiting location. Vehicles traveling at a high rate of speed.
- Restrooms are located within the parking lot.

Fire Watch Location



Fire Watch Location Map



Riley Wilderness Park #2 Oso Parkway

Thomas Brothers Guide: 922 H3

GPS: 33°35'08.5" N 117°36'49.8"W

Driving Directions from the 5 Freeway

- Exit Oso Parkway and head east 6.5 miles.
- The turnout is on your right hand side in front of the water district pump house just before Tesoro Way.

Driving Directions from the 241 Toll Road

- Exit and turn left on Oso Parkway.
- Continue to Antonio Parkway and make a U-turn heading back towards the toll road.
- Just before Tesoro Way is the water district pump house.

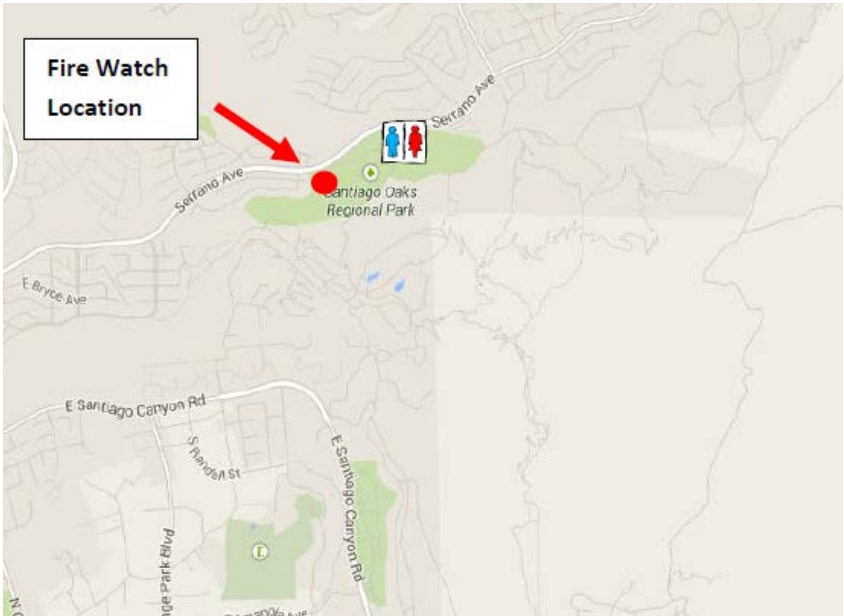
Safety & Hazards

- Be careful entering and exiting location. Vehicles traveling at a high rate of speed.
- Restrooms are located at the main parking lot at Riley Wilderness Park or at the nearby shopping center at Oso and Antonio Parkway.

Fire Watch Location



Fire Watch Location Map



Santiago Oaks Regional Park #1 Serrano Road

Thomas Brothers Guide: 770 H6

GPS: 33°49'34.4" N 117°46'17.4"W

Driving Directions from the 5 Freeway or Jamboree Road

- From the 5 Freeway exit Jamboree Road and head north (towards Tustin Marketplace).
- Follow Jamboree Road until you read Irvine Regional Park Entrance and turn left on E Santiago Canyon Road.
- Right on Cannon Road.
- Right on Serrano Road.
- The turnout is on the right hand side 100 feet past San Lorenzo Street.

Driving Directions from the 55 Freeway

- Exit Katella Avenue and head south.
- Left on Cannon Road.
- Right on Serrano Road.
- The turnout is on the right hand side 100 feet past San Lorenzo Street.

Safety & Hazards

- Be careful entering and exiting location. Vehicles traveling at a high rate of speed.
- Overhead power lines and tree branches along the road. If damaged by wind or fire could fall and cut off your primary escape route.
- Surrounding topography in the canyon could create fire conditions that could cut off escape route.
- Restrooms are located at the main parking lot city park off of Serrano and Kendra Drive (right hand side).

Fire Watch Location



Fire Watch Location Map



Santiago Oaks Regional Park #2 Ave De Santiago

Thomas Brothers Guide: 771 B5

GPS: 33°50'10.5" N 117°44'28.0"W

Driving Directions from the 5 Freeway or Jamboree Road

- From the 5 Freeway exit Jamboree Road and head north (towards Tustin Marketplace).
- Follow Jamboree Road until you read Irvine Regional Park Entrance and turn left on E Santiago Canyon Road.
- Right on Cannon Road.
- Right on Serrano Road.
- Continue for approximately 3 miles.
- Right on Hidden Canyon Road.
- Left on Ave De Santiago and continue until it dead ends at the trailhead.

Driving Directions from the 55 Freeway

- Exit Katella Avenue and head south.
- Left on Cannon Road.
- Right on Serrano Road.
- Continue for approximately 3 miles.
- Right on Hidden Canyon Road.
- Left on Ave De Santiago and continue until it dead ends at the trailhead.

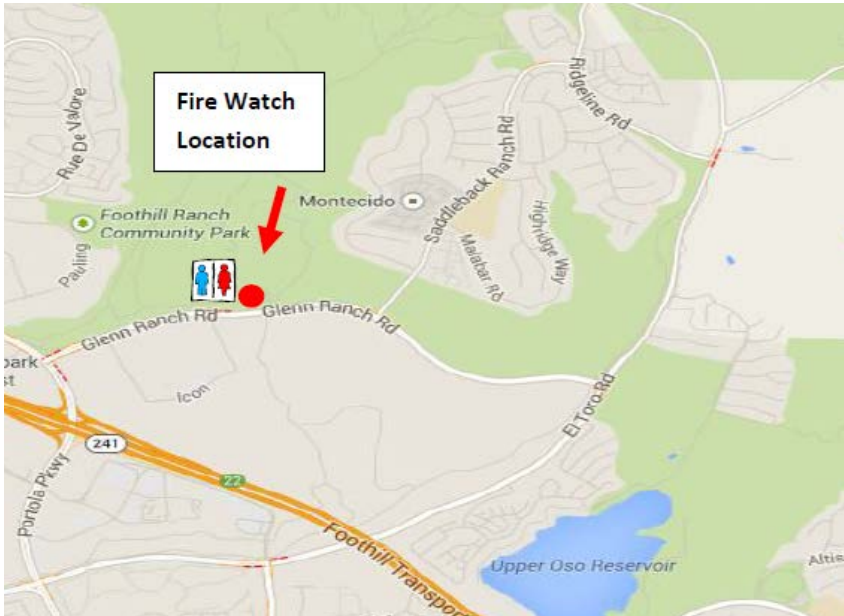
Safety & Hazards

- Surrounding topography in the canyon could create fire conditions that could cut off escape route.
- Fuel load in the area contains large amounts of light flashy fuels.
- Restrooms are located at the main parking lot city park at Serrano and Kendra Drive.

Fire Watch Location



Fire Watch Location Map



Whiting Ranch Wilderness Park #1 Main Parking Lot

Thomas Brothers Guide: 862 E5

GPS: 33°40'30.9" N 117°38'34.1"W

Driving Directions from the 5 Freeway

- Exit Lake Forest and head east for 3 miles.
- Right onto Portola Parkway.
- Right onto Glenn Ranch Road.
- Park entrance is on your left hand side. Park close to the trailhead.

Driving Directions from the 241 Toll Road

- Exit Portola Parkway and head east for 0.25 mile.
- Right onto Glenn Ranch Road.

Safety & Hazards

- Be cautious, area is known for mountain lion and rattlesnake activity.
- Overhead power lines and tree branches nearby. If damaged by wind or fire could fall and cut off your primary escape route.

Fire Watch Location



Fire Watch Location Map



Whiting Ranch Wilderness Park #2 Santiago Canyon Road

Thomas Brothers Guide: 862 E1

GPS: 33°42'04.4" N 117°38'26.5"W

Driving Directions from the 5 Freeway

- Exit El Toro Road and head east for approximately 7.5 miles and veer left at Cooks Corner onto Santiago Canyon Road. Continue approximately 2 miles.
- Right onto Falcon Road and park to the side.

Driving Directions from the 241 Toll Road

- Exit Portola Parkway and head west.
- Left on El Toro Road.
- Veer left at Cooks Corner onto Santiago Canyon Road. Continue approximately 2 miles.
- Right onto Falcon Road and park to the side.

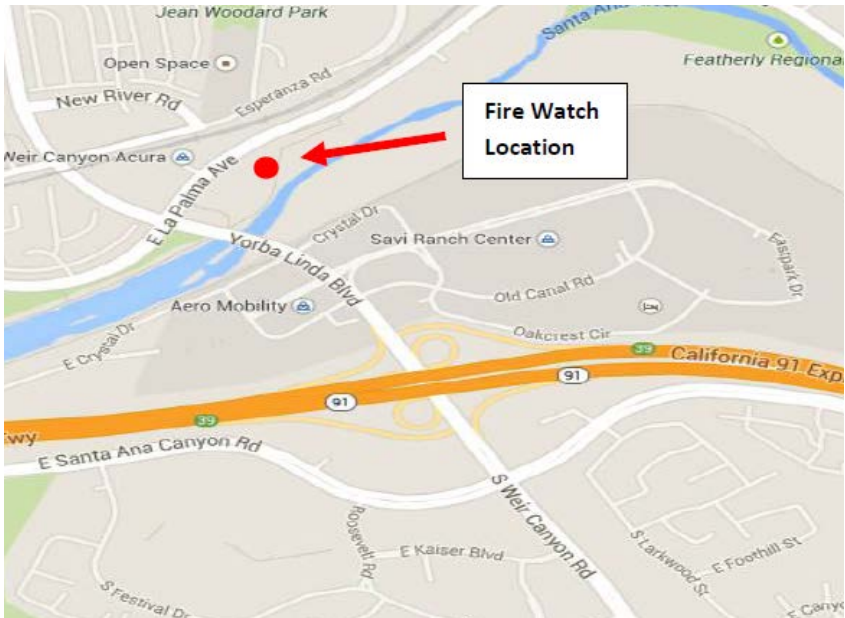
Safety & Hazards

- Be careful entering and exiting location. Vehicles traveling at a high rate of speed.
- Location views the backside of Whiting Ranch.
- High ignition history along Santiago Canyon Road.
- Surrounding topography in the canyon could create fire conditions that could cut off escape route.
- Overhead power line and tree branches along road. If damaged by wind or fire could fall and cut off your primary escape route.
- Restrooms located at nearby Concourse Park.

Fire Watch Location



Fire Watch Location Map



Yorba Regional Park/Featherly RV Park #1 La Palma

Thomas Brothers Guide: 770 F1

GPS: 33°52'34.8" N 117°44'55.8"W

Driving Directions from the 91 Freeway

- Exit Weir Canyon/Yorba Linda Blvd and head east underneath the freeway.
- Right on La Palma Avenue. The small hill on the right is the location.
- The turnout to the top of the hill is the third driveway on your right.
- Drive to the top and face east.

Safety & Hazards

- Be careful entering and exiting location. Vehicles traveling at a high rate of speed.
- Location views Featherly Park to the south and Yorba Regional Park to the north.
- High ignition history in Santiago Creek.

What Should I Do During A Fire Watch Shift?

- Wear your Fire Watch shirt, vest and volunteer badge at all times.
- Position yourself and your vehicle in a highly visible spot, with the Fire Watch magnets easily visible.
- Locate exit routes.
- Check nearby power lines, vehicle traffic, potential falling objects, or other safety hazards.
- Watch for ignition sources – intentional or unintentional.
- Look for and report suspicious activities.
- Engage the public to help spread the Fire Watch information and prevent ignitions.
- Intervene in suspicious behaviors.
- Record your observations and encounters.
- Above all, consider your safety your TOP priority.

Remember that the conditions are likely to be challenging. Fire Watch is usually only activated when it is extremely windy; there is likely to be blowing dust, debris, and other hazards. Be Prepared.



Ensuring Your Safety

Exit Strategy

Upon your arrival at your assigned Fire Watch lookout, plan an exit strategy. Discuss the exit strategy with other Fire Watch Volunteers assigned to your site. Be aware of one-way entrances; position yourself and your vehicle properly so you and your car can get out quickly.

Be aware of potential fire spread that could trap you based on weather, topography, and fuel types. Be aware of speed limits and traffic flow and direction (e.g., Santiago Canyon Road). Be aware of potential traffic bottlenecks. Predict the chaos that may happen and prepare for it. Locate safety zones so that if you cannot get out you know how to quickly get to any significant open areas where the fire will not overtake you. Discuss these with your volunteer partners.



Other Safety Guidelines

- Follow the prescribed routes while on patrol.
- Smoking and the appearance of smoking is PROHIBITED while on Fire Watch due to the obvious fire hazard. No smoking in and around the wildlands and parks ever.
- It is important to remember that you are the eyes and ears for early detection of fires within your patrol area. You are NOT to assume any responsibilities as a law enforcement official nor a firefighter.
- Wildfires move rapidly uphill, while people move slowly uphill; consequently, a fire may rapidly overtake you if you are attempting to escape it by moving uphill. If you see a fire nearby, move laterally or downhill away from the fire and smoke.
- Keep informed of fire weather conditions and forecasts.
- Base all actions on current and expected behavior of the fire.
- Maintain working communications. Insure cell phone is charged, ringer is on, ringer volume is high, and phone is easily accessible.
- Beware of unexpected shifts in wind direction or intensity.
- Beware of your surroundings at all times.
- Take no fire suppression action, call 9-1-1.

Communications

Proper communication during a Fire Watch is essential. It is a top priority for the Irvine Ranch Conservancy during the continuing development of the Fire Watch Program to upgrade and enhance communication abilities. Below is a review of the current communication systems in place for use during Fire Watch.

Cell Phones

Cell phones are currently the most effective form of communication for use while on Fire Watch. All volunteers should arrive at their Fire Watch posts with a fully charged and functional cell phone. It is advisable to bring a cell phone car charger or extra battery as well. We are aware that not all areas of the Irvine Ranch Natural Landmarks have strong cell phone reception. However, most Fire Watch locations, because they are on the perimeter of the Landmarks, do get service. Please be aware that cell phone reception does vary by service provider. Make a note of where your cell phone does and does not work during any Fire Watch program and be prepared to move into an area of reception quickly, should you need to make a call.

It is also important to have the cell phone numbers of other volunteers who are on Fire Watch during your shift, and that they have yours. When you sign up for a Fire Watch shift online your phone number will be visible along with all other volunteers who have signed up. We ask that you write down or print the time, location and phone numbers of other volunteers signed up during your shift, so you may contact them if needed. Also Emergency Contact Numbers are provided on the back of your ID badge and at the end of this Manual.

Key Messages For The Public About The Fire Watch Program

- We deploy our Fire Watch team during extreme fire weather to reduce the frequency of human caused wildfires.
- We are a visual deterrent to arsonist.
- We identify and intervene in suspicious circumstances or careless activities that otherwise might lead to an ignition.
- We are present for early detection and reporting of fires.
- We are working with community partners and volunteers to prevent accidental ignition.
- We want direct personal contact with communities threatened by wildfire to support their preventative efforts.



Key Messages For The Public About Fire Prevention

- Wildfires are a community problem not a fire department problem.
- Community members need to become more involved in preventing wildfires in their own neighborhoods.
- We need community members' help in preventing wildfires.
- More information: <http://www.letsgooutside.org>

Approaching People On Your Shift

Volunteers should communicate messages in this way to the public while on Fire Watch.

Identify yourself

“Hi my name is Bob, I am a trained volunteer with OC Fire Watch working on with the Orange County Fire Authority, the City of Irvine, and the County of Orange. The Orange County Fire Authority has issued a Red Flag Warning and it is recommended that the public stays out.”

Additional optional information

“Fire Watch is a partnership program to reduce ignition sources during extremely dangerous weather events. We also deter and report behaviors that could lead to fire and to spot fires quickly if they start. Please respect the extreme danger of the current weather conditions, we recommend you visit the wildlands on another day. Fires in the wildlands endanger lives and property and put the rare wildlife and plants at great risk.”

Notes

If people become aggressive and/or belligerent, please do not confront them. Immediately contact either the authorities or Irvine Ranch Conservancy for assistance. There should be many officials on patrol during this time and they can be of help.

Reporting A Fire To Emergency Services

Always be clear and concise when reporting a situation to authorities.

- When reporting, be sure to always identify who you are and what you are doing. Identify yourself.
- Stay calm.
- Follow the dispatcher's instructions.

If possible include the following when reporting a situation to emergency personnel:

- Fuel Type (grass, brush, woodland, structures)
- Fire Size
- Fire Origin (if clear)
- Location / Access Points
- Topography
- Number and Types of Structures Being Threatened
- Rate of Spread
- Special Hazards




Suspicious or Careless Activity

- Description of People Involved
- Description of Vehicles Involved
- Description of Activity
- Location of Activity
- Time and Context of Activity
- Your safety is your number one priority!
- Take NO fire suppression or law enforcement action. Call 9-1-1.

Fire Watch Reporting Log

As a Fire Watch volunteer, it is extremely important to keep and submit accurate reports of your experiences and encounters while on watch. Accurate reports will provide vital information on weather conditions, vulnerable areas and human behaviors that may be a threat to the open space.

Below is an example of the Fire Watch Reporting Log needed for a Fire Watch shift. You should carry hard copies of this form. Irvine Ranch Conservancy will provide hard copies of the report forms to you, as needed. They are also available on the website.

EXAMPLE  **EXAMPLE**

Fire Watch Reporting Log

Volunteer Name: Joe Smith Date: 9/18/13 Time of Arrival: 12:00pm Time of Departure: 3:00pm

Fire Watch Location: Laguna Canyon Road Gate 1

Time	Location	Observation / Contact	Vehicle Description & License Plate
12:07pm	Laguna Canyon Rd Gate 1	Temp: 87, RH 46%, Winds: 10-15mph	
12:32pm	Laguna Canyon Rd Gate 1	Vehicle pulled off to the side of the road. Observed 1 female between 50-60 yrs old walking out to the brush.	Orange Toyota Tacoma CA License plate F936089
1:14:5pm	Laguna Canyon Rd Gate 1	Vehicle pulled off to the side of the road. Observed 1 male between 30-40 yrs old with brown hair walking out from hill side. When I approached, he fell into the vehicle and fell.	Grey 4 door Honda CA License Plate B993102
2:00pm	Laguna Canyon Rd Gate 1	Temp: 93, RH: 22%, Winds 20-30mph	
2:30pm	Laguna Canyon Rd Gate 1	OCRA Battalion 5 Chief stopped by to say hello	
3:00pm	Laguna Canyon Rd Gate 1	Relieved by 100 FW volunteers Jane Doe & Bill Johnson	

Please complete all relevant forms while on your Fire Watch shift. Then submit the forms to Kevin McArthur, Fire Watch Coordinator. You may hand deliver, email, fax or mail your report to our office. Please mark all report logs "Attention Kevin McArthur".

Mailing Address:

Kevin McArthur, Irvine Ranch Conservancy
4727 Portola Parkway
Irvine CA 92620

Fax:

(714) 508-5758
Attn. Kevin McArthur

Email: kmcarthur@irconservancy.org

Fire Watch Photographs

It is always wise to carry a camera with you during your shift. If at any point during your Fire Watch shift you take photographs, please submit them along with your Fire Watch report packet, please either print hard copies of the photos and submit them with your report packet, or email your photos, along with date, time and location of where the photo was taken during your shift to Kevin McArthur at kmcarthur@irconservancy.org.



Emergency Contact Numbers

Emergency.....	911
Kevin McArthur (Questions/Concerns).....	(949) 525.0440
Irvine Police Dispatch (Law Enforcement, Open Space Patrol)	(949) 724.7200
O.C. Sheriff (Law Enforcement for Santiago Canyon Area)	(714) 647.7000
O.C. Fire Authority Dispatch	(714) 358.3505
Irvine Ranch Security	
Observing trespassing on Irvine Ranch Farms	(949) 936.8026
OC Parks (for non-emergency info only):	
Whiting Ranch Ranger.	(949) 923.2244
Irvine Ranch Open Space	(714) 973.6691
Irvine Regional Park Supervisor	(714) 973.6861
Cell Phone	(714) 267.6576
Laguna Coast Wilderness Park.	(949) 923.2235
Cell Phone.	(714) 277.9113
Crystal Cove State Park	(949) 494.3539
Irvine Ranch Conservancy (General Line)	(714) 508.4757
Trabuco Canyon Defense Against Wildfires.	(949) 413.5464
Greater Laguna Coast Safe Council	(949) 494.5157
Modjeska Canyon Fire Watch	(714) 649.3480

